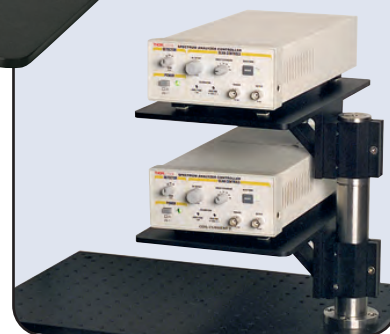


Benchtop Instrumentation Shelves

- Ideal for Shelving Small Instruments
- Bottom-Mounted Rubber Pads for Vibration Isolation
- Choose from 7" x 12" (178 x 305 mm) or 9" x 13" (229 x 330 mm)
- 1/4"-20 (M6 x 1.0) Mounting Holes
- Maximum Load Capacity of 35 lbs (77 kg) When a Load is Placed 5.00" (127.0 mm) Off Center



Rubber Pad
for Vibration
Isolation



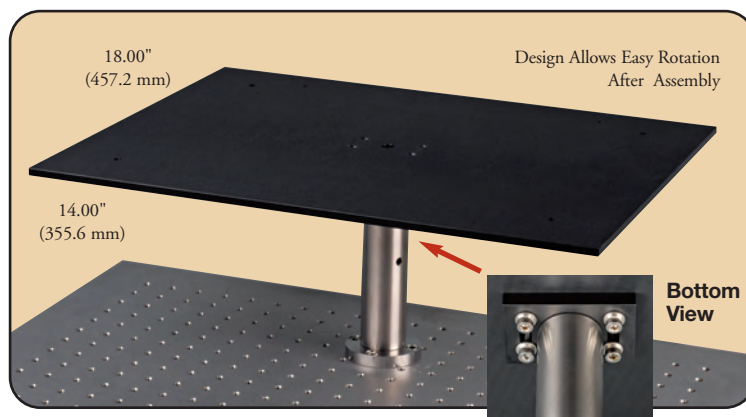
Design allows
for stacking
with a C1505
and a P-Series
Post (Sold
Separately)

Our Benchtop Instrumentation Shelves, which are available in two sizes, are an ideal solution for mounting several smaller instruments in a convenient out-of-the-way location. Rubberized feet, located on the bottom four corners of the shelf, provide excellent vibration isolation when placed on an optical table. Tapped holes along the edge of the shelf allow it to be directly post-mounted or mounted to our popular angle brackets (as shown to the right).

ITEM#	METRIC ITEM#	\$	£	€	RMB	DESCRIPTION
S712	S712/M	\$ 45.90	£ 31.90	€ 40,80	¥ 387.60	7" x 12" (178 x 305 mm) Benchtop Instrumentation Shelf
S913	S913/M	\$ 60.30	£ 41.90	€ 53,60	¥ 509.20	9" x 13" (229 x 330 mm) Benchtop Instrumentation Shelf

Post-Mounted Instrumentation Shelf

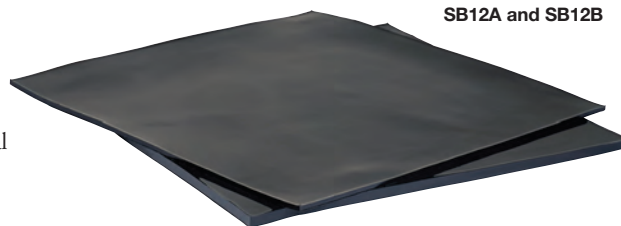
The S1418 instrumentation shelf attaches directly to an RS or P Series Post (sold separately, see page 100) and has a 35 lbs (77 kg) maximum load capacity when measured 6.00" (152.4 mm) off center. Once assembled, the plate can be rotated via an access hole in the top surface. Four corner-located mounting holes provide stability when using large, uneven loads. These holes can be used with our Ø1/2" (Ø12.7 mm) posts and post holders found on page 88.



ITEM#	METRIC ITEM#	\$	£	€	RMB	DESCRIPTION
S1418	S1418/M	\$ 82.00	£ 56.90	€ 72,90	¥ 692.50	14.00" x 18.00" (355.6 x 457.2 mm) Instrumentation Shelf

Sorbothane Sheets

- 12" x 12" (304.8 x 304.8 mm) Sheet Size with 1/4" (6.4 mm) or 1/8" (3.175 mm) Thickness
- Easy to Cut and Shape for Multipurpose Use
- Hardness: 70 Durometer
- Absorbs up to 95.5% of Impact Energy
- Can be used as a Vibration Isolation Material
- Ideal for use with Our MB Series of Aluminum Breadboards



ITEM#	\$	£	€	RMB	DESCRIPTION
SB12A	\$ 25.30	£ 17.60	€ 22,50	¥ 213.70	Sorbothane Sheet, 12" x 12" x 1/8", 70 Durometer
SB12B	\$ 49.50	£ 34.40	€ 44,00	¥ 418.00	Sorbothane Sheet, 12" x 12" x 1/4", 70 Durometer