

For current pricing, please see our website.

Specs Updated
10/8/13 - LF

CHAPTERS

Power Meters

Detectors

Beam Characterization

Polarimetry

Electronics Accessories

SECTIONS

Biased Photodetectors

Amplified Photodetectors

Photon Counter

Integrating Spheres

Photomultiplier Tubes

Balanced Detectors

Position-Sensing Detectors

Photodiodes

Photocurrent Amplifiers

Cameras

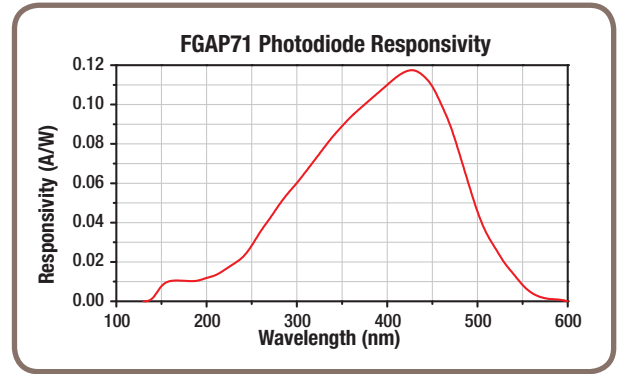
GaP Photodiode



FGAP71

The FGAP71 has a wide bandwidth and high spectral sensitivity in the UV and visible ranges (150 – 550 nm). The diode is mounted in a hermetically sealed, TO-39 package with a sapphire window.

- Wavelength Range: 150 – 550 nm
- 1 ns Rise Time, 140 ns Fall Time



ITEM #	\$	£	€	RMB	RISE/FALL TIME*	ACTIVE AREA	NEP	DARK CURRENT	WAVELENGTH
FGAP71	\$ 85.90	£ 61.85	€ 74.73	¥ 684.62	1 ns /140 ns	4.8 mm ²	1.0 x 10 ⁻¹⁴ W/√Hz	40 nA (1 V)	150 – 550 nm

*Photodiodes measured with 50 Ω load

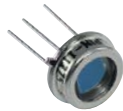
Si Photodiodes

Our silicon photodiode offerings include two calibrated photodiodes (FDS100-CAL and FDS1010-CAL), which come with device-specific calibration data. Thorlabs' calibrated photodiodes have a measurement uncertainty of ±5% and are NIST traceable.



FDS010

TO-5 Package
UV Fused Silica Window



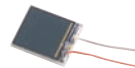
FDS100

Largest Sensor in TO-5 Package



FDS02

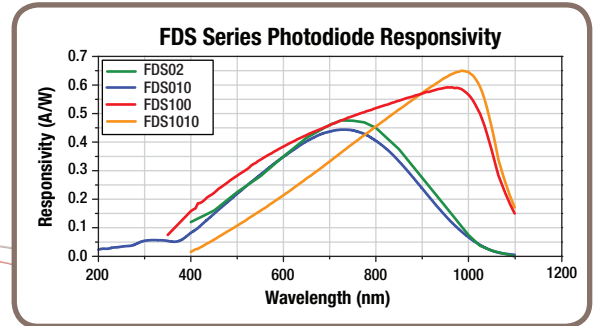
FC/PC Package for Fiber Coupling



FDS1010

Ceramic Wafer

Calibrated Photodiodes Available



ITEM #	\$	£	€	RMB	RISE TIME*	ACTIVE AREA	NEP	DARK CURRENT	WAVELENGTH
FDS010	\$ 42.10	£ 30.31	€ 36.63	¥ 335.54	1 ns	0.82 mm ² (Ø1.2 mm)	1.2 x 10 ⁻¹³ W/√Hz	0.3 nA (Typ., 10 V)	200 – 1100 nm
FDS100	\$ 13.10	£ 9.43	€ 11.40	¥ 104.41	10 ns	13 mm ² (3.6 x 3.6 mm)	1.2 x 10 ⁻¹⁴ W/√Hz	1.0 nA (Typ., 20 V)	350 – 1100 nm
FDS02	\$ 73.50	£ 52.92	€ 63.95	¥ 585.80	47 ps	Ø0.25 mm	9.3 x 10 ⁻¹⁵ W/√Hz	35 pA (5 V)	400 – 1100 nm
FDS1010	\$ 48.80	£ 35.14	€ 42.46	¥ 388.94	45 ns	94.1 mm ² (9.7 x 9.7 mm)	5.0 x 10 ⁻¹³ W/√Hz	1.0 µA (5 V)	400 – 1100 nm
FDS100-CAL	\$ 146.60	£ 105.55	€ 127.54	¥ 1,168.40	10 ns	13 mm ² (3.6 x 3.6 mm)	1.2 x 10 ⁻¹⁴ W/√Hz	20 nA (20 V)	350 – 1100 nm
FDS1010-CAL	\$ 176.30	£ 126.94	€ 153.38	¥ 1,405.11	45 ns	94.1 mm ² (9.7 x 9.7 mm)	4 x 10 ⁻¹³ W/√Hz	0.6 µA (5 V)	400 – 1100 nm

*Photodiodes measured with 50 Ω load

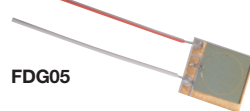
Ge Photodiodes

- Wavelength Range: 800 – 1800 nm
- Large Active Area
- Ideal for Pulsed and CW Sources

Thorlabs' germanium photodiode offerings include two calibrated photodiodes (FDG03-CAL and FDG05-CAL), which come with device-specific calibration data. All of Thorlabs' calibrated photodiodes have a measurement uncertainty of ±5% and are NIST traceable.

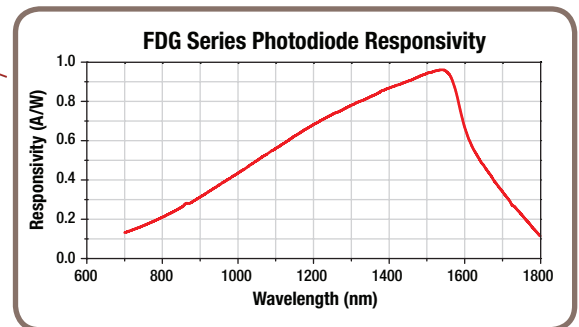


FDG1010
Largest Area on a Ceramic Substrate



FDG05

Calibrated Photodiodes Available



ITEM #	\$	£	€	RMB	RISE TIME*	ACTIVE AREA	NEP	DARK CURRENT	WAVELENGTH
FDG03	\$ 121.50	£ 87.48	€ 105.71	¥ 968.36	500 ns @ 3 V	7 mm ² (Ø3 mm)	1 x 10 ⁻¹² W/√Hz	4.0 µA (1 V)	800 – 1800 nm
FDG05	\$ 232.40	£ 167.33	€ 202.19	¥ 1,852.23	220 ns @ 3 V	19.6 mm ² (Ø5 mm)	4.0 x 10 ⁻¹² W/√Hz	40 µA (3 V)	
FDG1010	\$ 426.00	£ 306.72	€ 370.62	¥ 3,395.22	3.5 µs @ 1 V	100 mm ² (10 x 10 mm)	4.0 x 10 ⁻¹² W/√Hz	50 µA (0.5 V)	
FDG03-CAL	\$ 271.00	£ 195.12	€ 235.77	¥ 2,159.87	500 ns @ 3 V	7 mm ² (Ø3 mm)	1.0 x 10 ⁻¹² W/√Hz	4.0 µA (1 V)	
FDG05-CAL	\$ 374.00	£ 269.28	€ 325.38	¥ 2,980.78	220 ns @ 5 V	19.6 mm ² (Ø5 mm)	4.0 x 10 ⁻¹² W/√Hz	40 µA (3 V)	

*Photodiodes measured with 50 Ω load