

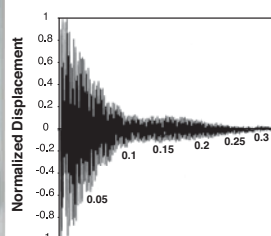
Ø1.5" Damped Mounting Post



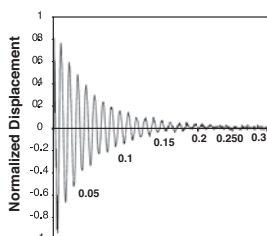
By combining dynamic damping techniques in the upper section with lead shot in the lower section of our Ø1.5" Damped Post, we have produced a mounting post that outperforms other designs.

The performance of the DP14 Damped Mounting Post is illustrated by the time-domain impulse response plots below. To obtain the information shown, an impulse force was applied to a hollow, solid, and damped post, each with a 1 lb. load attached to the top. The displacement due to the applied impulse was monitored using an accelerometer. Although the ringing response of a hollow post is slightly better than that of a solid post, the DP14 Damped Mounting Post clearly provides the best ringing response. For the DP14, the impulse energy is quickly dissipated in approximately 50 ms.

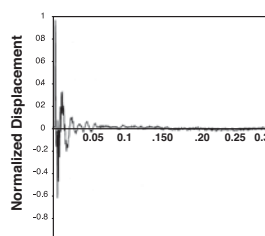
- Dynamic Damping Provides Fast Ring Down
- Nickel-Plated Steel for Long Life
- Removable Base for Added Flexibility
- 1/4"-20 (M6 x 1.0) Mounting Hole on Top and Bottom
- Weight: 6.85 lbs. (3.1 kg)



Time (Sec)
Solid Steel Post

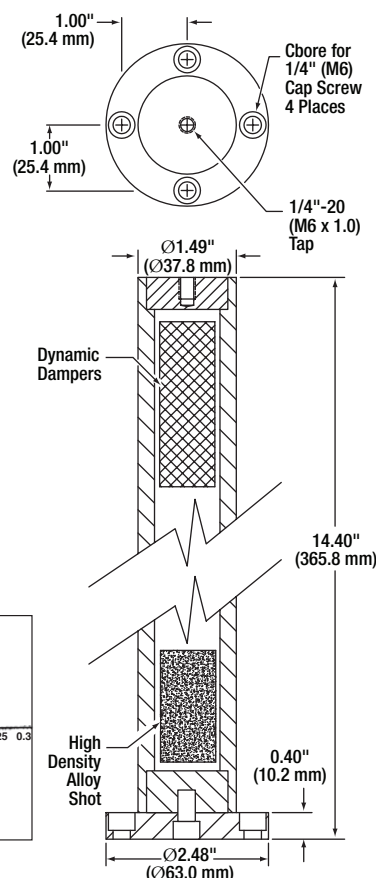


Time (Sec)
Hollow Steel Post



Time (Sec)
DP14 Damped Post

DP14



Please refer to our website for complete models and drawings.

ITEM #	METRIC ITEM #	\$	£	€	RMB	DESCRIPTION
DP14	DP14/M	\$ 199.00	£ 143.28	€ 173.13	¥ 1,586.03	Ø1.5" Damped Mounting Post, 14" Long

Pedestal Post Adapter



Posts Sold
Separately

PF175



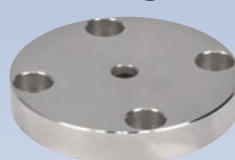
PB4

The PB4 Pedestal Post Adapter is designed to thread onto the bottom of our P-Series Posts. This allows our heavy-duty PF175 Clamp to be used to position the post assembly conveniently on your optical bench.

ITEM #	METRIC ITEM #	\$	£	€	RMB	DESCRIPTION
PB4	PB4/M	\$ 12.40	£ 8.93	€ 10.79	¥ 98.83	P-Series Pedestal Base Adapter
PF175*	PF175*	\$ 16.80	£ 12.10	€ 14.62	¥ 133.90	P-Series Clamping Fork

*Imperial and Metric Compatible

Mounting Post Bases



PB1
1/4" (M6) Counterbores



PB2
1/4"-20 (M6 x 1.0)
Tapped Hole

PB1

The standard post base bolts directly onto P-Series posts. To mount on an optical breadboard, four 1/4" (M6) counterbored holes on 2.00" (50.0 mm) centers are provided.

PB2

The universal post base allows arbitrary placement of the P-Series post. The PB2 attaches to P-Series posts with a 1/4"-20 (M6 x 1.0) center-tapped hole. To mount on a breadboard, four 1/4" (M6) counterbores are provided.

ITEM #	METRIC ITEM #	SIZE	\$	£	€	RMB
PB1*	PB1*	Ø2.48" x 0.4"	\$ 23.70	£ 17.06	€ 20.62	¥ 188.89
PB2	PB2/M	Ø2.40" x 1/2"	\$ 26.80	£ 19.30	€ 23.32	¥ 213.60

*Imperial and Metric Compatible