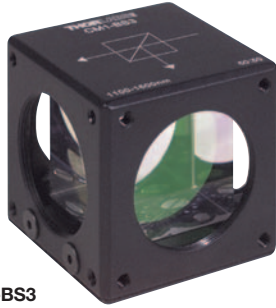


Optomechanics

Beamsplitter Cubes



CM1-BS3

Specifications

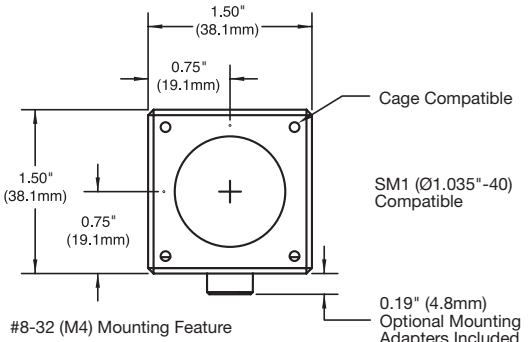
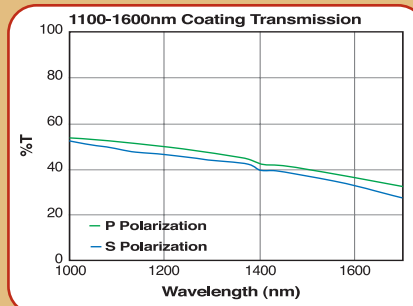
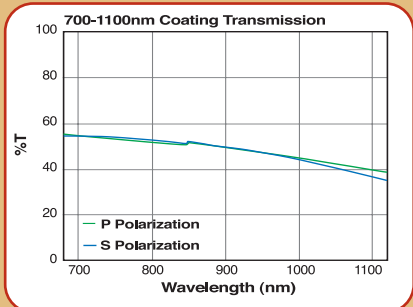
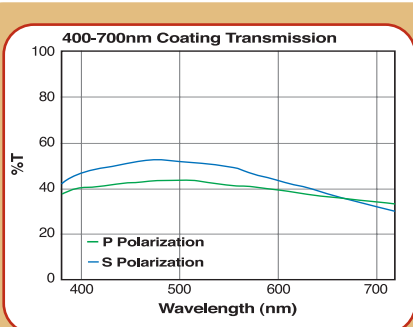
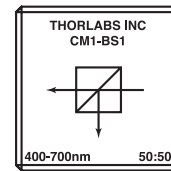
- **Reflected Beam:** $90^\circ \pm 5\text{arcmin}$ of Incident Beam
- **Lens Tube Mounting:** SM1 Series Thread (1.035"-40)
- **Cage System Mounting:** #4-40 Tapped Holes on 30mm Centers

- Compatible With 30mm Cage System and Lens Tube
- Saves Time in Optical Setups
- Keep Optics Clean by Eliminating the Need to Handle the Glass
- Ideally Suited for Quick Prototyping

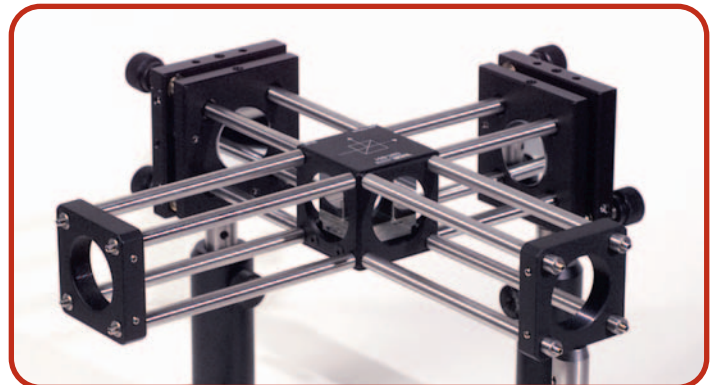
We have taken some of our most popular beamsplitters and have packaged them to reduce the time required for prototyping optical systems. Each optic is mounted in a 1.5" (38.1mm) square cube and prealigned for easy integrated into systems using Thorlabs' SM1 of series lens tubes and 30mm cage systems. Beamsplitters have been aligned so the reflected portion of the beam exits within $\pm 5\text{arcmin}$ of 90° .



SM1CP2



Interferometer Setup Made From Cage System Components



Visit www.thorlabs.com For Mechanical Drawings and Our New Solid Models



ITEM #	\$	£	€	RMB	DESCRIPTION
CM1-BS1	\$ 265.00	£ 167.00	€ 246,50	¥ 2,530.80	Polarization Insensitive Beamsplitter Mounting Cube, 400-700nm
CM1-BS2	\$ 275.00	£ 173.30	€ 255,80	¥ 2,626.30	Polarization Insensitive Beamsplitter Mounting Cube, 700-1100nm
CM1-BS3	\$ 288.00	£ 181.40	€ 267,80	¥ 2,750.40	Polarization Insensitive Beamsplitter Mounting Cube, 1100-1600nm
SM1CP2	\$ 18.80	£ 11.80	€ 17,50	¥ 179.50	SM1 Thread (1.035"-40) Endcap