

Fiber Optics

SMA 905 Fiber Connectors

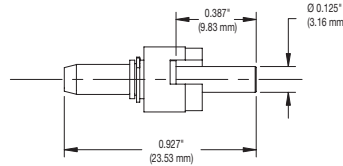


Crimp Tool CT042 Required for 3mm Tubing

SMA Main Body

SMA style connectors are most commonly used with multimode fibers. The ferrule design on the SMA connector makes it an ideal choice for large core fibers. Thorlabs stocks a complete selection of SMA connector sizes to accommodate our full line of large core fibers (see pages 1093-1099).

Custom Drilled Connectors Available
Call Tech Support



ITEM#	\$	£	€	RMB	FIBER SIZE
10125A	\$ 8.99	£ 5.65	€ 8,35	¥ 85.90	125 µm
10140A	\$ 9.45	£ 5.95	€ 8,80	¥ 90.20	140 µm
10230A	\$ 9.45	£ 5.95	€ 8,80	¥ 90.20	230 µm
10250A	\$ 9.45	£ 5.95	€ 8,80	¥ 90.20	250 µm
10260A	\$ 9.45	£ 5.95	€ 8,80	¥ 90.20	260 µm
10270A	\$ 9.45	£ 5.95	€ 8,80	¥ 90.20	270 µm
10340A	\$ 9.45	£ 5.95	€ 8,80	¥ 90.20	340 µm
10410A	\$ 9.45	£ 5.95	€ 8,80	¥ 90.20	400 µm
10440A	\$ 9.45	£ 5.95	€ 8,80	¥ 90.20	445 µm
10510A	\$ 9.55	£ 6.00	€ 8,90	¥ 91.20	500 µm
10610A	\$ 9.55	£ 6.00	€ 8,90	¥ 91.20	600 µm
10640A	\$ 9.55	£ 6.00	€ 8,90	¥ 91.20	630 µm
10770A	\$ 9.55	£ 6.00	€ 8,90	¥ 91.20	750 µm
10850A	\$ 9.55	£ 6.00	€ 8,90	¥ 91.20	830 µm
11040A	\$ 9.98	£ 6.30	€ 9,30	¥ 95.30	1030 µm
11050A	\$ 10.25	£ 6.45	€ 9,55	¥ 97.90	1050 µm
11275A	\$ 10.25	£ 6.45	€ 9,55	¥ 97.90	1250 µm

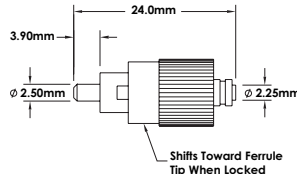
¹Ferrule hole size is +10 µm over fiber size.

²Ferrule hole size is +20 µm over fiber size.

FC Ceramic Fiber Connectors



These connectors come complete with a strain relief boot for 3 mm and/or 900 mm tubing. Crimp Tool CT042 Required for 3mm Tubing

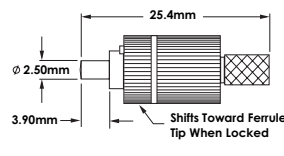


This FC single mode connector features a pre-radiused (R20 mm) ceramic ferrule; the pre-radiused tip minimizes back reflections. These connectors come complete with a strain relief boot for Ø3 mm and/or Ø900 mm tubing.

ITEM#	\$	£	€	RMB	DESCRIPTION
30126D1	\$ 8.00	£ 5.05	€ 7,45	¥ 76.40	FC, Single Mode, 125 µm
30080D1	\$ 19.95	£ 12.55	€ 18,55	¥ 190.50	FC, Single Mode, 80 µm
190044-50	\$ 0.41	£ 0.26	€ 0,40	¥ 3.90	900 µm Strain Relief Black
190044-55	\$ 0.41	£ 0.26	€ 0,40	¥ 3.90	900 µm Strain Relief Yellow

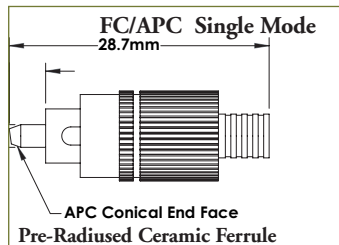


Crimp Tool CT042 Required for 3mm Tubing

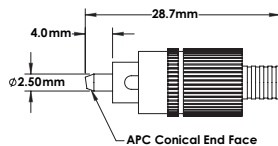


This FC multimode connector features a ceramic ferrule and a pre-radiused tip to minimize back reflections.

ITEM#	\$	£	€	RMB	DESCRIPTION
30140E1	\$ 8.95	£ 5.65	€ 8,30	¥ 85.50	FC, Multimode, 140 µm
190044-50	\$ 0.41	£ 0.26	€ 0,40	¥ 3.90	900 µm Strain Relief Black
190044-55	\$ 0.41	£ 0.26	€ 0,40	¥ 3.90	900 µm Strain Relief Yellow

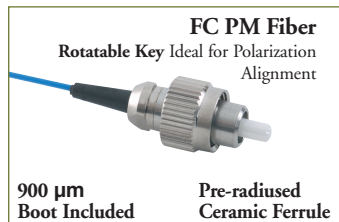


Crimp Tool CT042 Required for 3mm Tubing

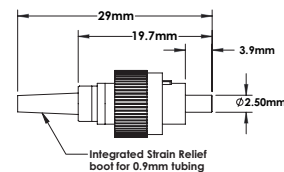


The FC/APC connector has an 8° pre-angled ceramic ferrule that simplifies the production of angled polishes. This typically results in a <60dB return loss. This connector has a low 0.25dB connector-to-connector loss.

ITEM#	\$	£	€	RMB	DESCRIPTION
30126F1	\$ 11.50	£ 7.25	€ 10,70	¥ 109.80	FC/APC, 125 µm, 3mm Boot
30126K1	\$ 11.50	£ 7.25	€ 10,70	¥ 109.80	FC/APC, 125 µm, 900 µm Boot



No Crimp Tool Required



These FC connectors are designed for Polarization Maintaining (PM) Fibers. The key is continuously adjustable, allowing precise alignment with the axis of the PM fiber. (No crimp tool required)

ITEM#	\$	£	€	RMB	DESCRIPTION
30127D2	\$ 10.75	£ 6.75	€ 10,00	¥ 102.70	FC, PM, 125 µm, 900 µm Boot