

For current pricing, please see our website.

CHAPTERS

Tables/
Breadboards

Mechanics

Optomechanic
Devices

Kits

Lab Supplies

SECTIONS

Mini Series

Ø1/2" Post
Assemblies

Ø1" Post
Assemblies

Ø1.5" Post
Assemblies

Mounting/Angle
Brackets

Lab Platforms

Instrument Shelves

Lens Tubes

Cage Systems

Optical Rails

Mirror Mounts

Kinematic Mounts

Fixed Mounts

Translation Mounts

Rotation Mounts

Filter Mounts

V-Mounts

Iris/Apertures

Adapters

60 mm Cage Cubes and Accessories (Page 1 of 2)

Cage Cube



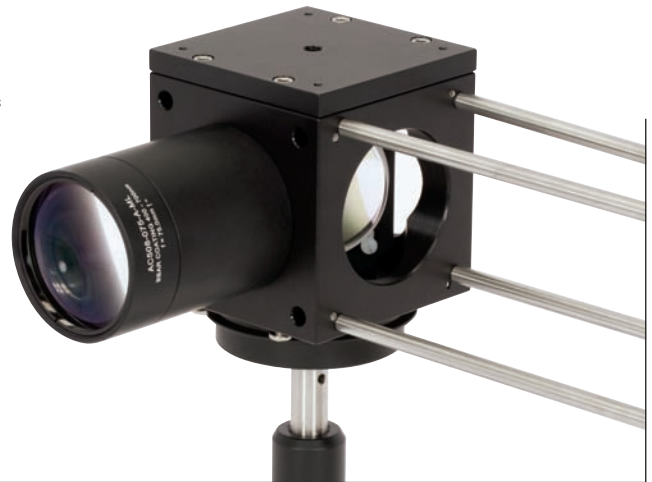
LC6W
3.00" Square Cube for
60 mm Cage Systems

• Ø6 mm ER Series Rods
Pass Completely
Through on Two Sides

• 8-32 Holes for
Attaching Cover Plates
on Two Sides

- Four SM2-Threaded Ports
- Two Opposing Faces Threaded for 60 mm Cage Rods
- Ø6 mm Through Holes
- Mounts to ER Series Cage Rods

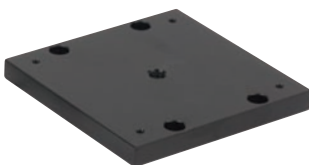
The LC6W is a 60 mm cage cube designed for building 2D cage systems while providing a means to mount optics such as beamsplitters inside. Two opposing faces have tapped holes to accept ER cage rods, while the other two opposing faces offer through holes. This allows for 1D translation of a section in a cage assembly. Setscrews are used to secure the cube to cage rods that pass through the cube's through holes.



ITEM #	METRIC ITEM #	\$	£	€	RMB	DESCRIPTION
LC6W	LC6W*	\$ 128.00	£ 92.16	€ 111,36	¥ 1,020.16	60 mm Cage Cube with Clearance Holes

*Imperial and Metric Compatible

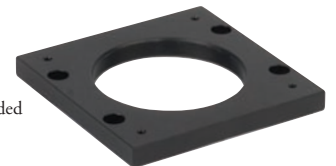
Cage Cube Cover Plates



LB1C
Blank Cover Plate



LB2C
SM2-Threaded
Cover Plate



- O-Ring Forms Light-Tight Seal with Cube
- 4-40 Tapped for 60 mm Cage Compatibility
- 1/4"-20 (M6 x 1.0) Tapped Hole for Post Mounting

- Provides an Additional SM2-Threaded Hole for Cube
- 4-40 Holes for 60 mm Cage Systems
- Attach SM2 Series Lens Tubes and Accessories

Two cube plates are offered for the LC6W cube. The LB1C(M) is a blank cover plate that is designed to provide a light-tight environment within the cube via a rubber o-ring. The opposite side of this plate features one centered 8-32 (M4) tapped hole for mounting purposes. The LB2C(M) is an SM2-threaded cage cube plate, which allows SM2-threaded components to mate to the top or bottom faces of the LC6W cube.

ITEM #	METRIC ITEM #	\$	£	€	RMB	DESCRIPTION
LB1C	LB1C/M	\$ 28.00	£ 20.16	€ 24,36	¥ 223.16	Blank Cover Plate
LB2C	LB2C*	\$ 28.00	£ 20.16	€ 24,36	¥ 223.16	SM2-Threaded Cover Plate

*Imperial and Metric Compatible

Cage
Products
Available
in 16, 30,
& 60 mm
Versions

60 mm Cage Cubes and Accessories (Page 2 of 2) Rotatable Cage Cube Platforms

CHAPTERS ▼

Tables/
Breadboards

Mechanics

Optomechanic
Devices

Kits

Lab Supplies

SECTIONS ▼

Mini Series

Ø1/2" Post
Assemblies

Ø1" Post
Assemblies

Ø1.5" Post
Assemblies

Mounting/Angle
Brackets

Lab Platforms

Instrument Shelves

Lens Tubes

Cage Systems

Optical Rails

Mirror Mounts

Kinematic Mounts

Fixed Mounts

Translation Mounts

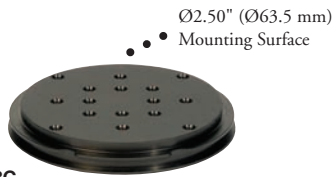
Rotation Mounts

Filter Mounts

V-Mounts

Iris/Apertures

Adapters



LB3C
General Purpose, Lockable
360° Manual Rotation Plate

- Sixteen 6-32 (M4) Tapped Holes
- 8-32 (M4) Tap for Post Mounting
- Ideal for Mounting Beamsplitter Cubes, Prisms, and Other Bulk Optics



LB4C
Rotatable Kinematic
Prism Platform Plate

- 1/4"-80 TPI Adjusters Provide Roll, Pitch, and Translation
- Lockable, 360° Manual Rotation Ideal for Beamsplitter Cubes and Prisms
- 6-32 (M4) Taps
- 8-32 (M4) Tap for Post Mounting
- Total Vertical Travel: 0.25" (6.4 mm)

The LB3C and LB4C prism platforms mount into the top or bottom of our LC6W cage cubes. Prior to being locked down with the included mounting screws, they can also be freely rotated through 360° while inside the cage cube. Each LB3C platform features sixteen 6-32 (M4) tapped holes, while the LB4C has eight

6-32 (M4) tapped holes, which can be used to mount our LB5C optic mount. These tapped holes may be used with our PM3(/M) clamping arm to hold items such as prisms. The bottom of each platform has an 8-32 (M4) tapped hole, thereby allowing it to be mounted onto a TR series post.

ITEM #	METRIC ITEM #	\$	£	€	RMB	DESCRIPTION
LB3C	LB3C/M	\$ 44.20	£ 31.82	€ 38,45	¥ 352.27	Rotatable Cover Plate
LB4C	LB4C/M	\$ 126.00	£ 90.72	€ 109,62	¥ 1,004.22	Kinematic Rotatable Cover Plate

*Imperial and Metric Compatible

Cage Cube Optic Mount



LB5C
Ø2.00" (Ø50.8 mm)
Optic Mount

- Designed for Prism Mounting Platforms (LB3C and LB4C)
- Nylon Screws Secure Ø2" Optics Up to 0.47" (12.0 mm) Thick

The LB5C optic mount holds a Ø2" optic on a rotatable platform (above). When used within an LC6W cage cube, three nylon screws are used to center the optic.



LB5C
Holding a Ø2" Mirror
in a LC6W Cage Cube

ITEM #	METRIC ITEM #	\$	£	€	RMB	DESCRIPTION
LB5C	LB5C*	\$ 54.60	£ 39.31	€ 47,50	¥ 435.16	Ø2.00" Optic Mount for 60 mm Cage Cube

*Imperial and Metric Compatible

Cage Cube Clamp

The LB6C cage cube clamp is compatible with the LC6W 60 mm cage cube. The clamping mechanism comes from a 5/16"-18 adjuster with a Delrin swivel tip to help avoid marring the clamped object. This adjuster features a 5/32" (4 mm) hex socket to loosen or tighten the clamp. The cube clamp plate has an O-ring that forms a light-tight cage cube when used with the LB1C blank plates and C4W cube. Please note that a blank cover plate (LB1C) or cage cube platform (LB3C, LB4C) must be used in conjunction with the clamp. This clamp is best suited for use with rectangular objects and other objects with parallel top and bottom surfaces.



LB6C
Swivel Head
Clamp Cover Plate

- Delrin® Swivel Head Adjuster Prevents Damage to Optic
- 5/32" Hex Socket Adjuster Clamp
- Securely Clamps Cubes, Prisms, and Bulk Optics

ITEM #	METRIC ITEM #	\$	£	€	RMB	DESCRIPTION
LB6C	LB6C*	\$ 28.00	£ 20.16	€ 24,36	¥ 223.16	Swivel Head Clamp Cover Plate

*Imperial and Metric Compatible