

▼ CHAPTERS

Tables/  
Breadboards

Mechanics

Optomechanic  
Devices

Kits

Lab Supplies

▼ SECTIONS

Mini Series

Ø1/2" Post  
Assemblies

Ø1" Post  
Assemblies

Ø1.5" Post  
Assemblies

Mounting/Angle  
Brackets

Lab Platforms

Instrument Shelves

Lens Tubes

Cage Systems

Optical Rails

Mirror Mounts

Kinematic Mounts

Fixed Mounts

Translation Mounts

Rotation Mounts

Filter Mounts

V-Mounts

Iris/Apertures

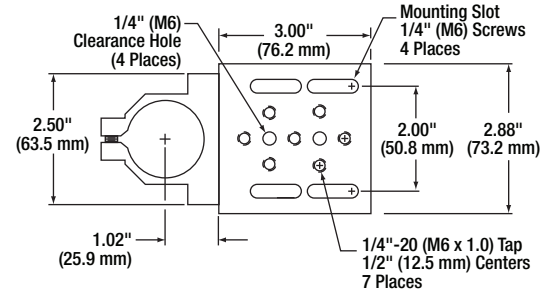
Adapters

## Ø1.5" Mounting Post Bracket



C1505

The C1505 fits any Ø1.5" post. The angle bracket provides an array of mounting options: four 1/4" (M6) clearance slots, seven 1/4"-20 (M6 x 1.0) mounting taps, and two 1/4" (M6) clearance holes.



Please refer to our website for complete models and drawings.

ITEM #	METRIC ITEM #	\$	£	€	RMB	DESCRIPTION
C1505	C1505/M	\$ 90.00	£ 64.80	€ 78,30	¥ 717.30	Ø1.5" Mounting Post Bracket

## Ø1.5" Adjustable-Height Collar



PSHA

Fully Extended: 1.68" (42.7 mm)



Fully Retracted: 1.26" (32.0 mm)



C1505

PSHA

The PSHA Adjustable-Height Collar offers a convenient height adjustment for Ø1.5" post-mounted hardware. An easy-to-access adjustment ring allows fine height adjustment at 0.025" (0.64 mm) per revolution over a range of 0.42" (10.7 mm).

ITEM #	\$	£	€	RMB	DESCRIPTION
PSHA	\$ 58.00	£ 41.76	€ 50,46	¥ 462.26	Ø1.5" Adjustable-Height Collar

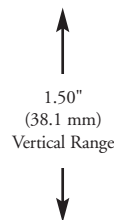
## Ø1.5" Adjustable Platform

This manually adjusted platform is intended for applications that do not require the precision or flexibility of a laboratory jack. When locked, this platform provides a very stable 2.85" x 2.85" (72.4 mm x 72.4 mm) work surface.

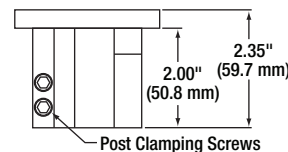
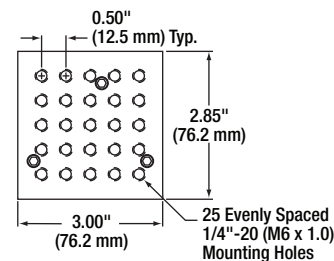
- 1.50" (38.1 mm) Vertical Range
- Fits Any Ø1.5" Post



C1506



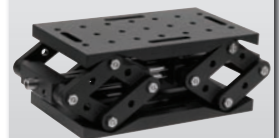
Post and Base Sold Separately  
(See Pages 106 - 107)



ITEM #	METRIC ITEM #	\$	£	€	RMB	DESCRIPTION
C1506	C1506/M	\$ 89.00	£ 64.08	€ 77,43	¥ 709.33	Ø1.5" Adjustable Platform

Have you  
seen our...

Lab Jack



Heavy-Duty Design for  
Basic Research, Industrial  
R&D, and High-  
Precision Manufacturing

See page 499

 **Mechanical**  
Drawings Available on the  
**WEB**