

▼ CHAPTERS

Fiber Patch
Cables

Bare Fiber

Fiber
OptomechanicsFiber
ComponentsTest and
Measurement

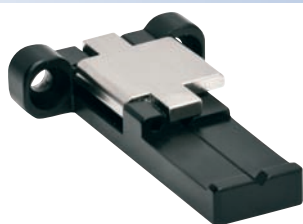
▼ SECTIONS

FiberBench

FiberPorts

Fiber Launch
Platforms

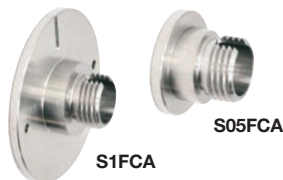
Fiber Adapters



Bare Fiber Adapter

This adapter holds bare fibers between Ø250 µm and Ø450 µm and is typically used with our S140 series integrating spheres featured on page 1563. However, its two M2.5 countersunk counterbores allow it to be mounted in custom applications as well.

ITEM #	\$	£	€	RMB	DESCRIPTION
S140-BFA	\$ 120.00	£ 86.40	€ 104.40	¥ 956.40	Bare Fiber Adapter



Unthreaded Fiber Adapters

These fiber adapters have FC/APC connectors and smooth outer diameters, making them compatible with either Ø1/2" or Ø1" optomechanics. The S1FCA has two dimples for compatibility with the SPW801 adjustable spanner wrench (page 446).

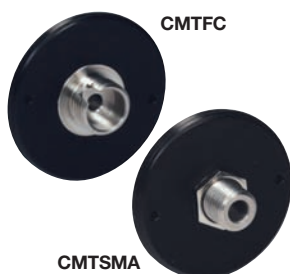
ITEM #	\$	£	€	RMB	DESCRIPTION
S05FCA	\$ 32.00	£ 23.04	€ 27.84	¥ 255.04	1/2" Smooth O.D. to FC/APC
S1FCA	\$ 32.00	£ 23.04	€ 27.84	¥ 255.04	1" Smooth O.D. to FC/APC



SM05-Threaded Fiber Adapters

Externally SM05-threaded (0.535"-40) fiber adapters are available for placing FC/PC, FC/APC, SMA, or ST connectorized fibers in SM05-threaded components. The SM05 threading is compatible with our Ø1/2" lens tubes (page 128) and many of our 16 mm mini-series cage plates (page 169).

ITEM #	\$	£	€	RMB	DESCRIPTION
SM05FC	\$ 26.00	£ 18.72	€ 22.62	¥ 207.22	External SM05 to FC/PC Adapter
SM05FCA	\$ 32.00	£ 23.04	€ 27.84	¥ 255.04	External SM05 to FC/APC Adapter
SM05SMA	\$ 26.00	£ 18.72	€ 22.62	¥ 207.22	External SM05 to SMA Adapter
SM05ST	\$ 26.00	£ 18.72	€ 22.62	¥ 207.22	External SM05 to ST Adapter



C-Mount Threaded Fiber Adapters

NEW
products

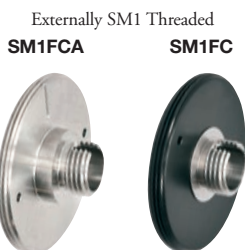
We have introduced this line of C-mount fiber adapters to provide compatibility with the C-mount threading (1.00"-32) commonly found on camera-based components. These externally threaded C-mount adapters have two dimples for compatibility with the SPW801 adjustable spanner wrench (page 446).

ITEM #	\$	£	€	RMB	DESCRIPTION
CMTFC	\$ 26.00	£ 18.72	€ 22.62	¥ 207.22	External C-Mount to FC/PC Adapter
CMTFCA	\$ 42.00	£ 30.24	€ 36.54	¥ 334.74	External C-Mount to FC/APC Adapter
CMTSMA	\$ 26.00	£ 18.72	€ 22.62	¥ 207.22	External C-Mount to SMA Adapter

SM1-Threaded Fiber Adapters

SM1-threaded (1.035"-40) fiber adapters are available either internally or externally threaded. The SM1 threading is compatible with our Ø1" lens tubes (page 134) and many of our 30 mm cage plates (page 177). Additionally, this threading is found on many of our detectors to simplify fiber measurements. These externally threaded adapters have two dimples for compatibility with the SPW801 adjustable spanner wrench (page 446).

Externally SM1-Threaded Fiber Adapters



ITEM #	\$	£	€	RMB	DESCRIPTION
SM1FC	\$ 27.00	£ 19.44	€ 23.49	¥ 215.19	External SM1 to FC/PC Adapter
SM1FCA	\$ 30.00	£ 21.60	€ 26.10	¥ 239.10	External SM1 to FC/APC Adapter
SM1SMA	\$ 27.00	£ 19.44	€ 23.49	¥ 215.19	External SM1 to SMA Adapter
SM1ST	\$ 27.00	£ 19.44	€ 23.49	¥ 215.19	External SM1 to ST Adapter

Internally SM1-Threaded Fiber Adapters



ITEM #	\$	£	€	RMB	DESCRIPTION
S120-FC	\$ 38.00	£ 27.36	€ 33.06	¥ 302.86	Internal SM1 to FC/PC Adapter
S120-SC	\$ 48.00	£ 34.56	€ 41.76	¥ 382.56	Internal SM1 to SC Adapter
S120-LC	\$ 48.00	£ 34.56	€ 41.76	¥ 382.56	Internal SM1 to LC Adapter
S120-SMA	\$ 38.00	£ 27.36	€ 33.06	¥ 302.86	Internal SM1 to SMA Adapter
S120-ST	\$ 38.00	£ 27.36	€ 33.06	¥ 302.86	Internal SM1 to ST Adapter